

Reve 21

REVE21 VISION FOR REDUCING CO2 EMISSIONS

GX League ²⁰²²

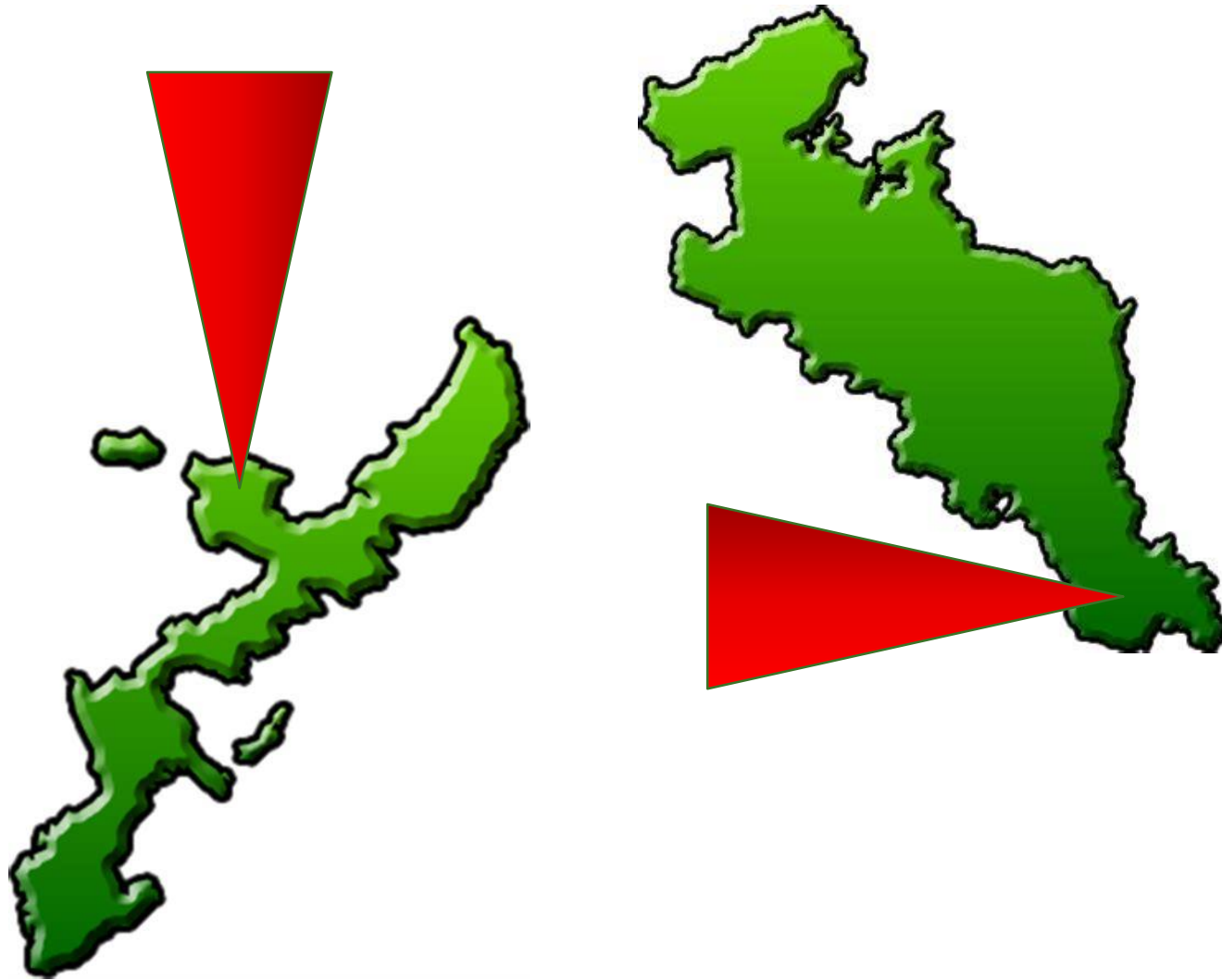


Reve 21

Afforested area

A) Managed farm
Kyoto: 992 m²

B) Abandoned
farmland
Okinawa : 3306 m²



Moringa plantation is underway in Kyoto and Okinawa prefectures as part of global warming prevention activities

Reve21

Afforestation Ecosystems

Business Use
Electricity and gas



Energy
Basic Emissions
549.0t CO2/year



CO2 Absorption by
Moringa Plantation
2290 trees: Zero carbon
Moringa: 280 kg of CO2 absorption per year
(Villafuerte, and Villafuerte-Abonal 2009)

Emissions during
operations
CO2 emitted by
Staff and Customers



Non-energy
Basic emissions
46.1t CO2/year

The point is to also absorb human CO2 emissions associated with the project.

Reve 21

Afforestation Ecosystems



Water-
Quality
Purifying
Shampoo



BY-PRODUCTS:
SEEDS



MORINGA PLANTATION:
CO2 REDUCTION



BY-PRODUCTS:
LEAVES



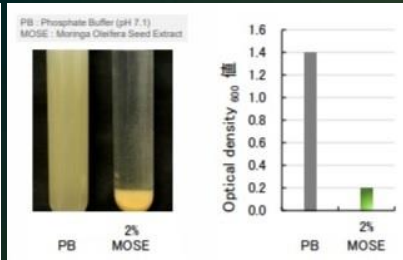
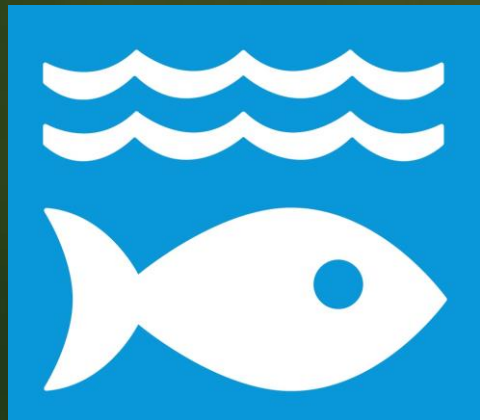
Moringa
Leaf
Powder

The challenge is that afforestation projects generally end with the planting of trees.



Water-Quality Purifying Shampoo

SDGs Goal 14



Environmental Benefits



HARVEST: SEEDS



Moringa Plantation



PRUNING: LEAVES



Moringa Leaf Powder

SDGs Goal 15



Pruned leaves are used as health food and harvested seeds are used as raw materials for water purification



Our Focused Initiatives - 1

Sustainable Environment

Specific Measures



Cultivation in
facilities
▼
CO2
absorption

Endorsed by: Kyoto Okamoto
Memorial Hospital

Cultivated as houseplants in the facility to absorb indoor CO2

Reve 21

Our Focused Initiatives-2

Water-Quality
Purifying Shampoo



Specific Measures



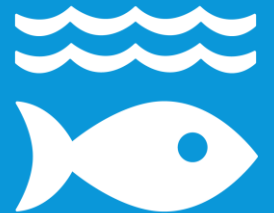
Inside the
facility

Environmental
Impact
Reduction

Sustainable Environment

- Adopted as a start-up by the Cabinet Office (2021)
- Representative of Japan in GIF2021

14 海の豊かさを
守ろう



By using the new eco-system products, you can contribute to reducing environmental impact from within your facility.

Reve 21

Carbon neutral: 2024 goal

Outdoor
Planting

▼
CO₂
absorption



13 気候変動に
具体的な対策を



Indoor
Cultivation

▼
CO₂
absorption



Reve 21

管理農園

SUSTAINABLE
DEVELOPMENT
GOALS



SUSTAINABLE
DEVELOPMENT
GOALS

In addition to planting outdoors, you can physically increase the number of plants by growing them indoors as houseplants

Carbon neutral (N) to carbon pricing (P)

Reve 21

2022

2024

2030

2050

Tree Planting Start

2290 trees.
N Achieved

13 気候変動に
具体的な対策を

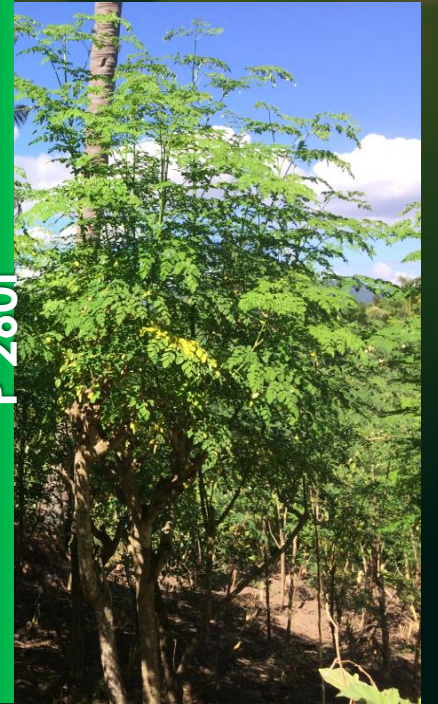


SUSTAINABLE
DEVELOPMENT
GOALS

2030年に向けて
世界が合意した
「持続可能な開発目標」です

2800 trees.
P 150t

3200 trees.
P 260t



The first plan is to achieve carbon neutrality in 2024, and the second plan is to ensure carbon pricing thereafter



Decades cycle of afforestation



Utilizing trees as building and craft materials prolongs CO₂ fixation.

HOME

[お知らせ/OZCaF通信](#)

[イベント/セミナー](#)

[取組み事例](#)

[資料/動画](#)

取組み事例 Examples of efforts

OZCaFでは、今後脱炭素経営に取り組もうとする会員にとって参考になる先行事例や関連記事、リンクを紹介していきます。
当会では会員からの様々な情報ご提供をお待ちしておりますので、是非事務局までご連絡ください。



NEW 2022年04月22日



脱炭素

カーボンニュートラルのための植林活動（SDGsゴール13）の実施
株式会社毛髪クリニックリープ21



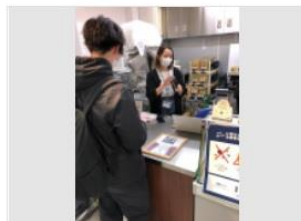
「岸和田だんじり祭のカーボンフットプリント」算定・分析

2022年01月12日



脱炭素公民連携

「岸和田だんじり祭カーボンフットプリント」の算定・分析
岸和田市



2022年01月07日



脱炭素SDGs

ペットボトルレスキャンパスの実現を目指しマイボトルヘッドリンクを提供する実証実験の実施
学校法人近畿大学



2022年01月05日



公民連携SDGs

大阪府内小学校にて出前授業が行われました
OSAKAゼロカーボンファウンデーション

Registered
with the
OSAKA Zero
Carbon
Foundation
(OZCaF)
and posted in the
"Case Studies"
section of the
official website

Reve 21

Listed in Examples of Advanced Efforts to Achieve a Decarbonized Society in 2050



Reve 21

【Contact】

**Truly, Genuinely.
Your Hair**

Hair Clinic Reve-21 Co.,Ltd.

22F MID tower,Twin21, 2-1-61 Shiromi,Chuo-ku, Osaka, JAPAN
TEL 06-4794-2480 FAX 06-4794-2481

SDGs department Mr Nishijima
sdgs@reve21.co.jp



Hair Clinic Reve-21 Co.,Ltd. Director Nishijima Takanori E-mail nishijima_t@reve21.co.jp